
RE: APNs 0370061041, 0370061042, and 0370061043

1 message

Sac.Plan <sacplan@saccounty.gov>

Fri, Jan 24, 2025 at 11:07 AM

To: Tammy Tengs <tammy@land22.com>, "Sac.Plan" <sacplan@saccounty.gov>

Hello Tammy,

These properties are zoned for single-family residential (RD-5). Each lot can have a single-family dwelling and ADU following the development standards listed in the links below:

- Development Standards for Single-Family Residences (Table 5.7.C): https://planning.saccounty.gov/LandUseRegulationDocuments/Documents/Zoning-Code/SZC_Chapter5.pdf#page=37
- Development Standards for ADUs: https://planning.saccounty.gov/LandUseRegulationDocuments/Documents/Accessory_Dwelling_Units_Handout.pdf

However, development may trigger site improvements. For Site Improvement questions, please contact County Engineering at DSSGeneralInfoVM@saccounty.gov.

Kind regards,

Bonnie on behalf of SacPlan

Planning & Environmental Review

827 7th Street, Suite 225, Sacramento, CA 95814<http://www.planning.saccounty.gov>

Planning and Environmental Review has several customer service options available and appointments can be made for most services. Please see our website at planning.saccounty.gov for the most current information on how to obtain services including office and public counter hours.

Contents of this email pertains to zoning/land use only and does not address compliance with building codes, fire codes, occupancy, permits/clearances needed from other agencies, etc and those questions must be directed to the appropriate agencies.

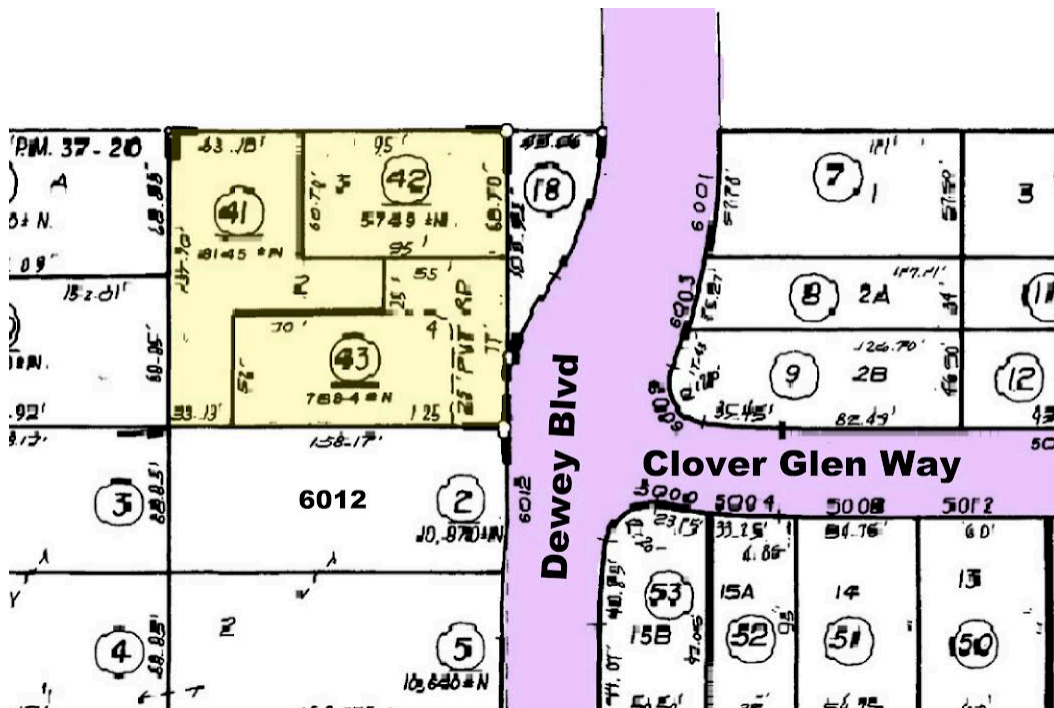
From: Tammy Tengs <tammy@land22.com>
Sent: Tuesday, January 21, 2025 8:38 AM
To: Sac.Plan <sacplan@saccounty.gov>
Subject: APNs 0370061041, 0370061042, and 0370061043

⚠ **EXTERNAL EMAIL:** If unknown sender, **do not** click links/attachments. ⚠
If you have concerns about this email, please report it via the Phish Alert button.

Hello,

I am a Realtor selling APNs 0370061041, 0370061042, and 0370061043 on Dewey Blvd in the Sacramento area. Can one house be built on each of these 3 lots, given their configuration? Thank you!

Map: <https://id.land/ranching/maps/c7d60f20849663e97387b2f8eac00328/share>



Tammy Tengs
Land22 Real Estate
www.land22.com
License #01436288